

Fillmore

Waterbody: North Fillmore Drain (tributary to Sespe Creek)

Location: 75 yds. southwest of Old Telegraph Rd.
(34°24'16.51"N, 118°55'50.47"W)

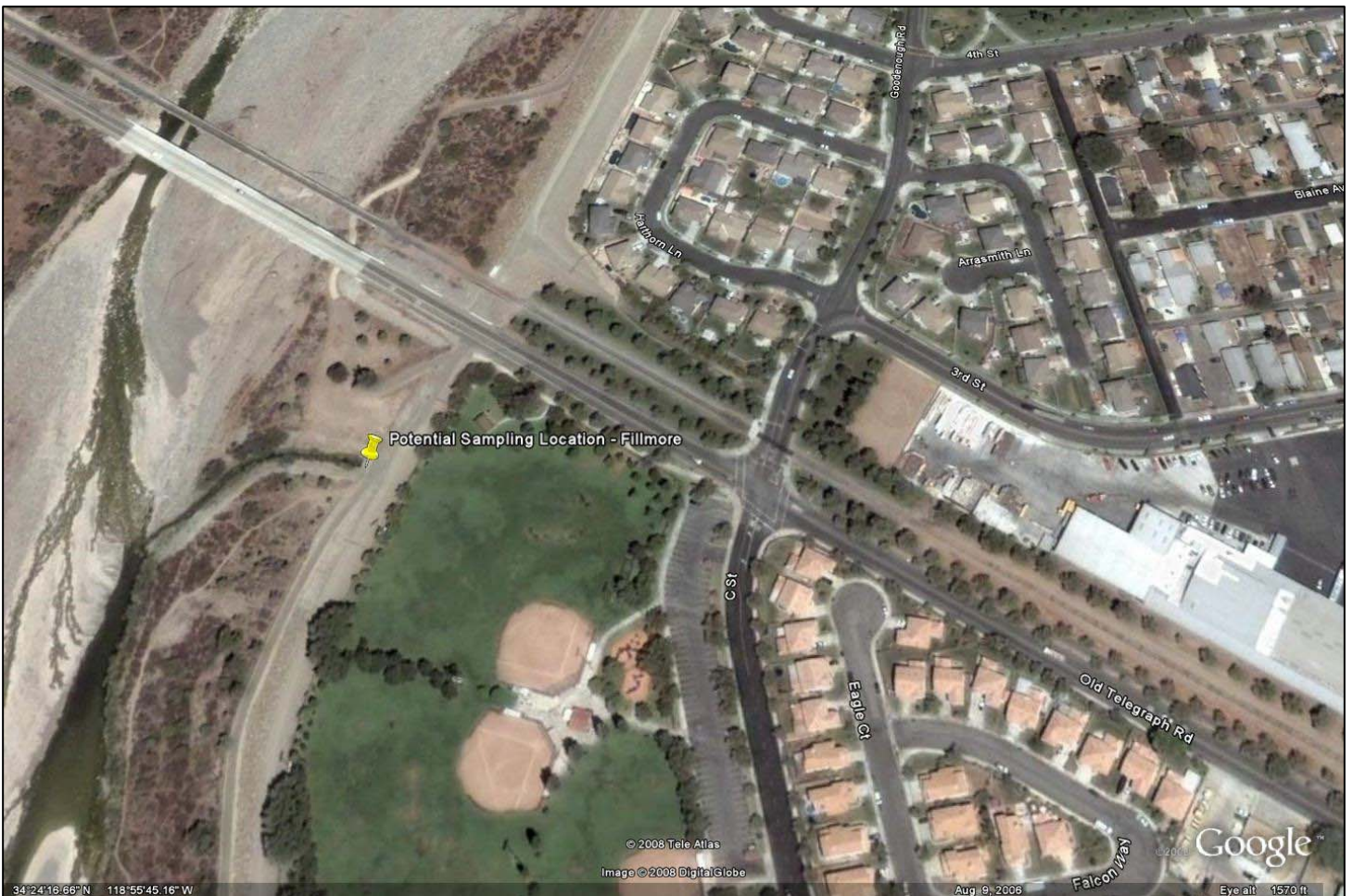
Pros: Some portion of vegetation could be cleared by City of Fillmore

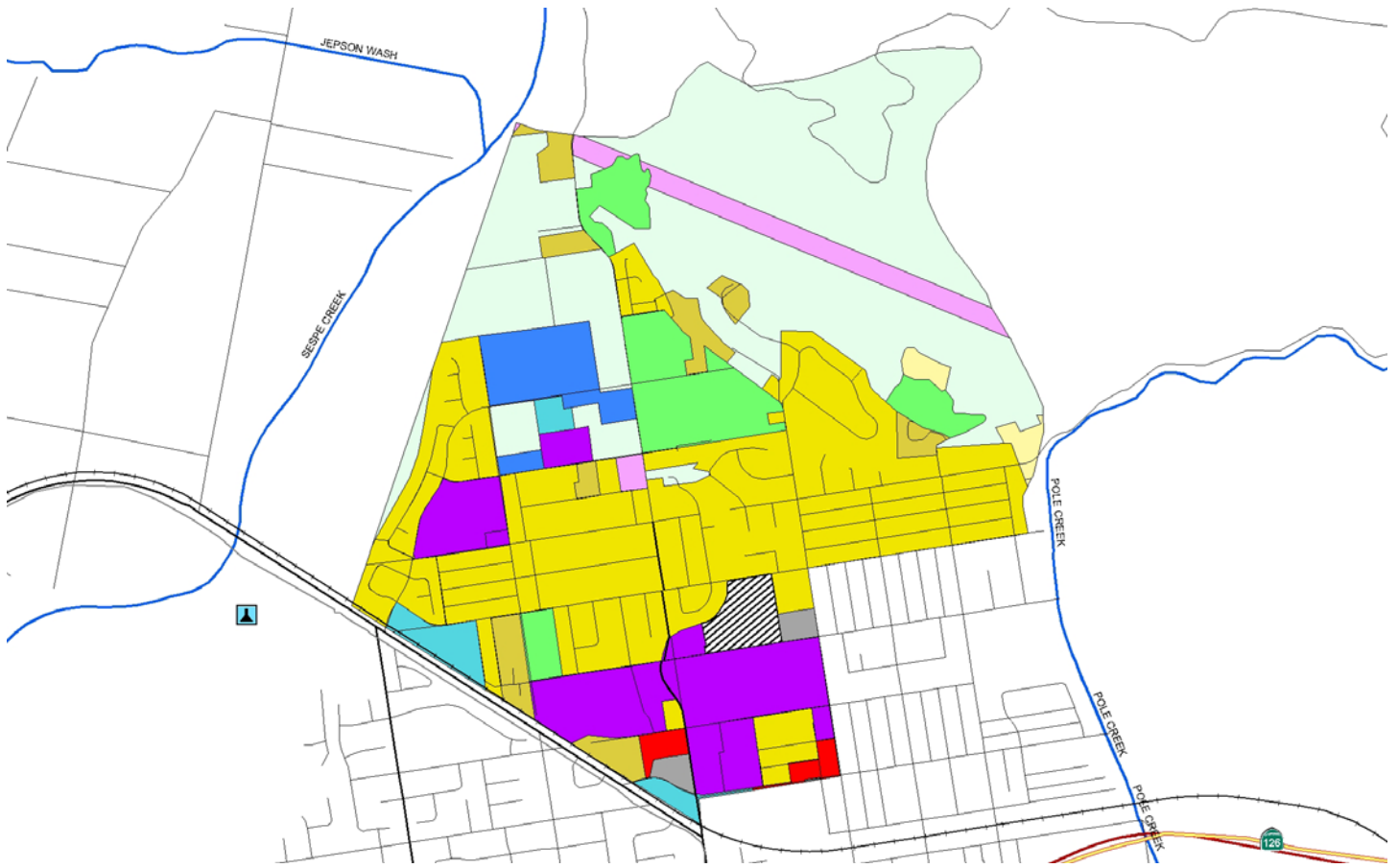
Cons: Potential for vandalism

Outstanding Site Selection Tasks: None

Other Potential Sites: C Street Drain and Central Ave. Drain

Dry Season Flow Potential: Likely intermittent year-round flow due to urban runoff





Entire City

Land Use	Acres	% of Total Watershed
Agriculture	274.8	13.0%
Com_Indus. Mix	10.4	1.0%
Commercial	103.2	5.0%
Facility	27.3	1.0%
Industrial_1	31.3	2.0%
Industrial_3	28.7	1.0%
No Info Given	21.9	1.0%
Res.1	52.8	3.0%
Res.2	44.6	2.0%
Res.3	693.1	34.0%
Schools	87.6	4.0%
Transportation	6.4	0.0%
Under Constructoni	58.4	3.0%
Utilities	45.8	2.0%
Vacant Undifferentiated	582.5	28.0%
Totals	2068.7	100.0%

Selected Subwatershed

Land Use	Acres	% of Total Watershed
Agriculture	52.5	6.9%
Commercial	6.3	0.8%
Facility	5.1	0.7%
Industrial_1	14.1	1.9%
Industrial_3	23.4	3.1%
No Info Given	9.9	1.3%
Res.1	6.1	0.8%
Res.2	29.7	3.9%
Res.3	255.7	33.6%
Schools	75.3	9.9%
Utilities	23.1	3.0%
Vacant Undifferentiated	260.6	34.2%
Totals	761.7	100.0%